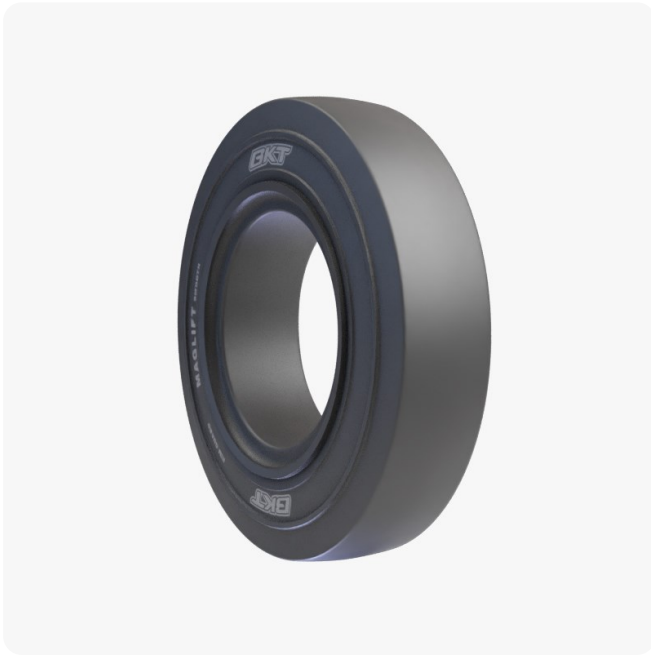


## MAGLIFT SMOOTH - Technical Specifications



### Description

MAGLIFT SMOOTH has been particularly designed for ground support equipment (GSE), port and industrial trailers operating on smooth surfaces. The tire is made of a special tread compound, which ensures excellent cut and chip resistance and a long tire life. The smooth tread design and its maximum contact area provide extraordinary stability and optimized load distribution even under heavy-duty service conditions. MAGLIFT SMOOTH stands for excellent traction as well as low rolling resistance and low heat built up for improved efficiency. In addition, the specifically designed rim guard ensures protection against wheel damage, whilst the reinforced bead structure ensures best grip and eliminates any slippage risk during operations.

### UM

International Standard

### Construction

◆ SOLID

### Machinery

Industrial: Trailer

Version	STANDARD
Type	
Tyre Size	12.00 - 20

## Dimensions International Standard

Overall Width (mm)	282
Overall Diameter (mm)	1088
Rim Rec	8.50 - 20

## Load capacity (Kg)

km/h / bar	-
25 LOAD WHEEL	7560
25 STEER WHEEL	6300
10 OTHER VEHICLES	6865

Rolling Circumference & SLR values are at rated Load and inflation pressure. These values may vary at different Load and pressure condition.

Printed on 29/04/2025 10:04

All product data contained in this publication are for information purposes only and may be modified at any time without prior notice. Balkrishna Industries Ltd. or any of its subsidiary companies does not undertake any responsibility or liability for undetected errors and/or misprints. All rights reserved. The materials and contents of this publication and the website are the exclusive property of Balkrishna Industries Ltd. and are protected by industrial and/or intellectual property laws. The user is not permitted to copy, reproduce, transfer, upload, make use of, publish or spread any contents, in whole or in part, on paper format, electronic format or otherwise without prior written consent by Balkrishna Industries Ltd..